

## Our Successes

We believe every child deserves the best education possible. We utilize school-specific solutions to assist teachers and students in fulfilling their potential.



The Excellence Group has served over 40% of MS districts in the past five years

391 additional accountability points were earned in 2019 by just 10 of the districts served by The Excellence Group

Of these 10 districts:  
1 moved up 2 performance levels  
4 moved up 1 performance level  
5 maintained their performance level



The Excellence Group is proud to partner with LearnSafe. LearnSafe at your school means school administrators will have actionable data that addresses at-risk behavior on school computers, be able to protect vulnerable students, and ensure a culture of digital responsibility.

## Who We Are

The Excellence Group, LLC, is an educational consulting organization that focuses on providing support to school districts, school administrators, and educators.

Since 2006, our mission has been to foster educational excellence among Mississippi's public school children.

We offer superior quality services which include professional development, school business consulting, using curriculum to raise test scores, and comprehensive school improvement.

## OUR LEADERS



Mr. Arthur McMillan



Mr. Jim Young



Dr. Cindy Morgan



Dr. Mina Bryan-Lightsey



Mr. Eddie Prather

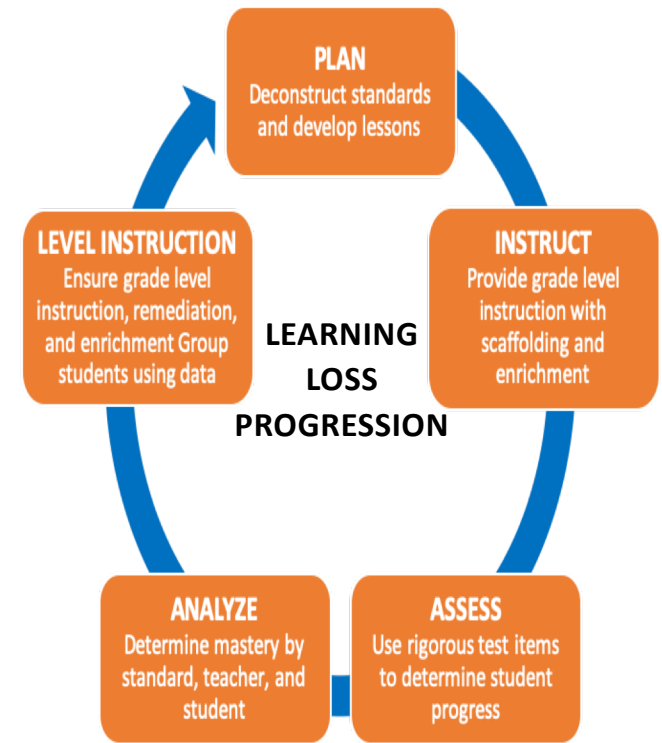


317 East Capitol Street, Suite 503  
Jackson, MS 39201

[excellencegroup.com](http://excellencegroup.com)

601-352-2413 Phone 601-354-3656 FAX

[info@excellencegroup.com](mailto:info@excellencegroup.com)



Finding Promise. Fulfilling Promises.

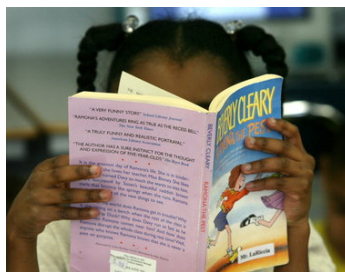
# LEARNING LOSS AFTER COVID 19

## THE EXCELLENCE GROUP LEARNING LOSS PLAN INCLUDES:

- Creating a district calendar for success
- Providing super blueprints to focus on heavily tested areas
- Develop or revise pacing guides to focus on areas of need
- Provide professional development for teachers on developing online instruction that includes remediation, enrichment, and proper rigor
- Observe classrooms online or face to face to determine engagement, level of rigor, etc.
- Assist with assessment development
- Assist with the development of online and face to face lessons that include strategies for teacher interaction with students

### The Excellence Group can also serve you in the areas of:

- Accountability, Accreditation, Assessment
- ACT Boot Camps
- Data Analysis
- Efficiency Scheduling
- English Language Learners
- Federal Programs Consultation and Training
- Multi-Tiered Systems of Support (MTSS)
- New Teacher Academy
- School Business Services
- School Leadership
- Strategic Planning
- Technology
- Third Grade Literacy Exam



*"The Excellence Group has assisted our district in improving its academic performance through administrative mentoring, refined assessment procedures, and improved special education articulation. Their services have been an integral part of our improvement efforts and I recommend them for your consideration."*

*Dr. David Daigneault, Superintendent,  
Grenada School District*

*Individual districts have individual needs. The Excellence Group offers catered services from district wide to building level. Contact us today for your customized plan.*



[info@excellencegroup.com](mailto:info@excellencegroup.com)  
601-352-2413 • 601-354-3656 FAX  
[excellencegroup.com](http://excellencegroup.com)



## LEARNING LOSS AFTER COVID 19

COVID 19 continues to significantly effect the academic progress of our students due to:

- Time out of school with little or no access to online learning
- Gaps in learning due to lack of prior knowledge
- Gaps in learning due to specific learning needs
- Lack of motivation
- Difficulty adapting lessons to online instruction that includes differentiated instruction

## FOCUS AREAS

**DATA** – Including formative and summative assessments with data being analyzed each 9 weeks

**PACING GUIDES** – Are they in place and being followed?

**STANDARDS** – Understanding content with appropriate rigor

**DIFFERENTIATION** – Including, scaffolding, enrichment, remediation

**ONLINE INSTRUCTION** – leveled lessons including teacher interaction with students, different for group work, emoji responses

**DOES YOUR DISTRICT HAVE HIGH EXPECTATIONS FOR ALL STUDENTS?**